

Zscaler™ and VMware SD-WAN by VeloCloud

Zscaler™ and VMware SD-WAN by VeloCloud combine Zscaler's Cloud Security Platform with VMware's Cloud-Delivered SD-WAN solution to optimize and secure local internet breakouts. Together, they enable fast and secure access to websites and business-critical cloud applications from branch and remote office locations.

SOLUTION OVERVIEW

As more applications move to the cloud, the old approach of backhauling traffic over MPLS to a centralized internet gateway via a hub-and-spoke architecture is no longer relevant. It is expensive and introduces unnecessary latency that negatively impacts user experience. To support a cloud transition and deliver a fast user experience, enterprise network architects are re-evaluating the design of their WAN architectures to find ways to route internet traffic locally, and to take advantage of inexpensive broadband internet services, often turning to Software-Defined Wide Area Networking (SD-WAN).

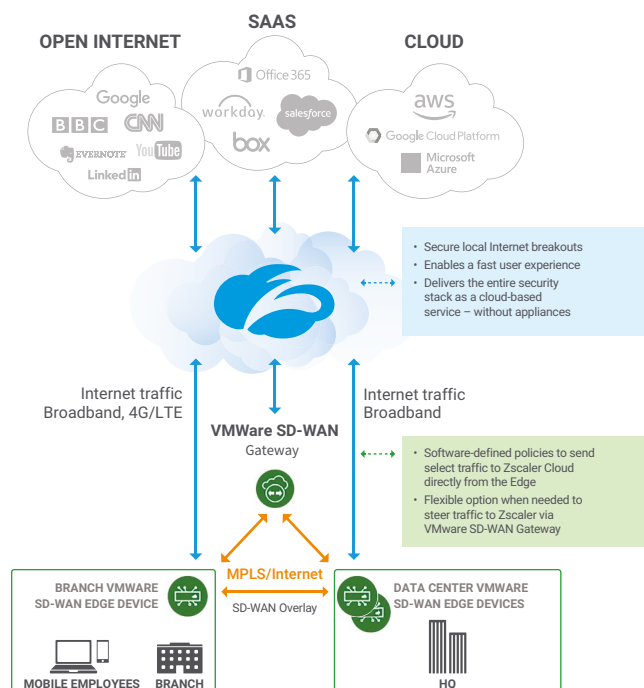
VMware Cloud-Delivered SD-WAN simplifies how traffic is steered and provides bandwidth expansion for the branch. It also provides direct access to cloud applications through a distributed system of VMware SD-WAN Gateways, a cloud-based VMware SD-WAN Orchestrator and a branch platform, VMware SD-WAN Edge. Using broadband along with MPLS as the transport mechanism, Dynamic Multi-Path Optimization steers traffic on a per packet basis to the optimal path as well as remediates transmission degradations. By defining policies in the cloud via a single interface, organizations can easily deploy new applications and services, and manage policies across a large number of locations.

However, connecting all branch locations directly to the internet introduces significant security and user-experience risks, which are particularly challenging to manage with limited IT resources. One-click service insertion capabilities provided by the VMware SD-WAN business policy framework reduces complexity and aligns business policies with application needs and business objectives. Traffic policies can be effectively managed to easily forward traffic from many branches to Zscaler Cloud Security Platform. Together, Zscaler and VMware SD-WAN by VeloCloud minimize exposure to these risks.

HIGHLIGHTS

- VMware Cloud-Delivered SD-WAN by VeloCloud simplifies connecting branches to the internet, by leveraging multiple network connection types (broadband, LTE, and MPLS) and assuring optimal performance over any type of links
- VMware SD-WAN by VeloCloud steers internet traffic locally to Zscaler directly from the VMware SD-WAN Edge or for performance sensitive traffic via its Gateway, to enable a fast and secure user experience
- Zscaler delivers the entire security stack as a cloud-based service that eliminates the need to buy, deploy, and manage security appliances in all your branch locations
- Zscaler ensures identical protection for users wherever they connect – with policies that follow the user
- Zscaler enables organizations to define and immediately enforce security and access policies across all locations from a single console, and together with VMware SD-WAN by VeloCloud allow rapid deployment of new security services in minutes, in just a few clicks

Zscaler delivers the entire security stack as a cloud service to secure internet traffic and deliver a fast user experience – without backhauling and without deploying stacks of security appliances at each location. By routing internet-bound traffic to Zscaler, customers can immediately begin inspecting all traffic – all ports and protocols, including SSL. Organizations can define and immediately enforce access and security policies across all locations from a single console. There is no compromising on security. Because policies follow the users to provide identical protection no matter where they connect. And, Zscaler cloud services scale elastically so you can deploy new services in just a few clicks.



Zscaler and VMware SD-WAN by VeloCloud

Zscaler and VMware SD-WAN by VeloCloud make it easy to migrate from a hub-and-spoke to an internet-only branch architecture by enabling secure and optimized local internet breakouts. With VMware Cloud-Delivered SD-WAN by VeloCloud, network administrators determine what traffic to steer to Zscaler. Typically, all internet bound traffic is forwarded to Zscaler, steering branch traffic from VMware SD-WAN Edge to the Zscaler Cloud Security Service using IPSec tunnels. But, if needed, customers have the flexible option to steer traffic via Gateway. Zscaler secures all traffic in the cloud, without security appliances and VMware SD-WAN delivers Dynamic multipath optimization. The combined Zscaler and VMware SD-WAN solution delivers a secure, high-performance SD-WAN solution that securely connects branches to the internet with a fast user experience.

About Zscaler

Zscaler services enable organizations to move securely from castle-and-moat networks to modern direct-to-cloud architectures. Zscaler cloud-delivered services securely connect users to applications, regardless of where users connect or where applications are hosted, while providing comprehensive threat prevention and a fast user experience. All without the cost and complexity of appliances.

About VMware

VMware software powers the world's complex digital infrastructure. The company's compute, cloud, mobility, networking and security offerings provide a dynamic and efficient digital foundation to over 500,000 customers globally, aided by an ecosystem of 75,000 partners. Headquartered in Palo Alto, California, this year VMware celebrates twenty years of breakthrough innovation benefiting business and society. For more information, please visit <https://www.vmware.com/company.html>

